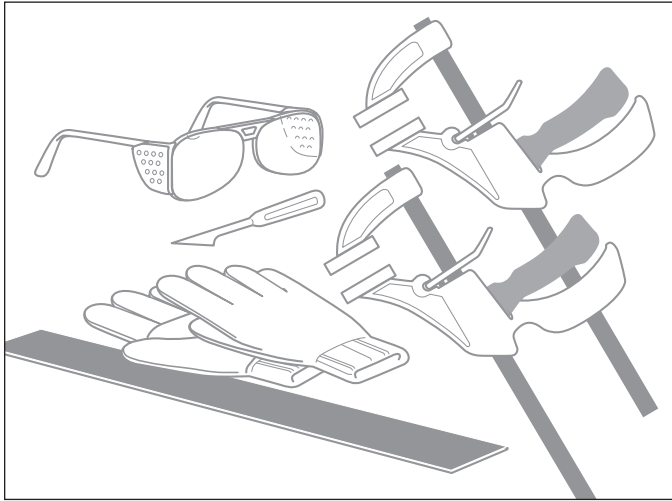


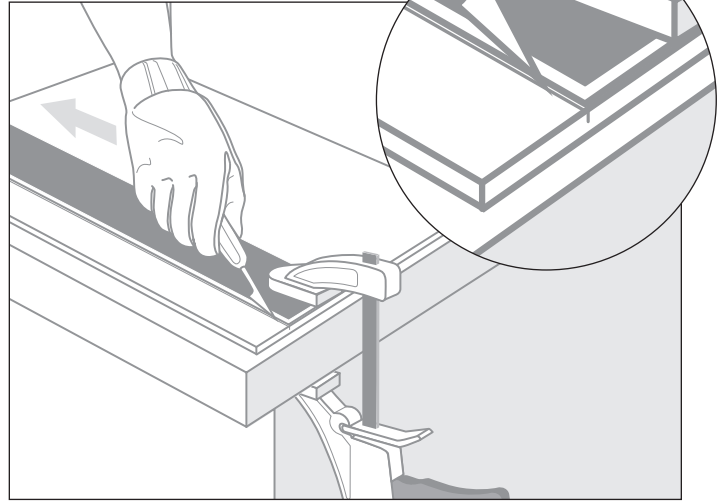
HOW TO CUT LIGHTING PANELS

FROM PLASKOLITE



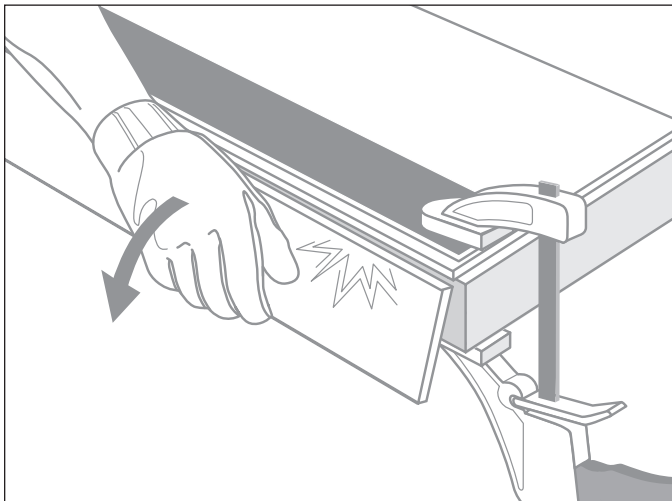
STEP 1: Tools Needed

- » Plastic scoring tool
- » Clamps
- » Tape measure
- » Safety glasses
- » Straight edge
- » Gloves



STEP 2: Measure and Score

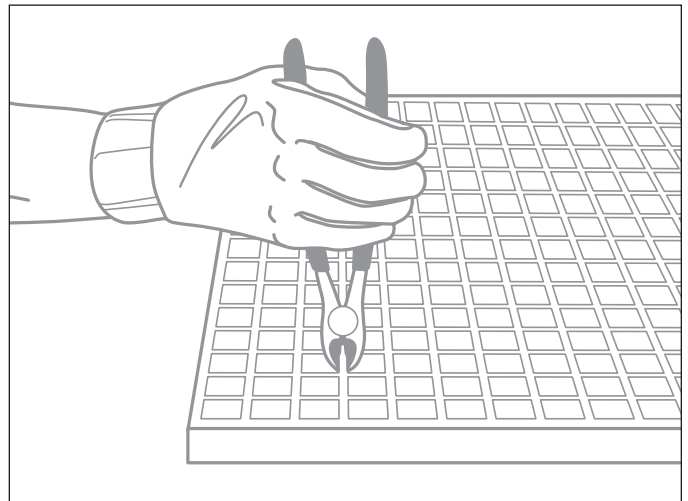
Measure and clamp panel with a straight edge. Using straight edge as a guide, lightly pull scoring tool across the smooth side of the panel. Repeat scoring until half way through panel thickness.



STEP 3: Snap Off

Hang scrap portion off edge of workbench and apply gentle downward pressure to break off.

Note: It may be helpful to reclamp panel before snapping off excess.



Lighting Louvers:

Snip off excess with diagonal cutters.

Please visit our website for videos on cutting lighting panels: www.plaskolite.com/resources

These suggestions and data are based on information we believe to be reliable. They are offered in good faith, but without guarantee, as conditions and methods of use are beyond our control. We recommend that the prospective user determines the suitability of our materials and suggestions before adopting them on a commercial scale.

© 2021 PLASKOLITE, LLC

PLASKOLITE

400 Nationwide Blvd, Suite 400
Columbus, OH 43215
800.848.9124 • Fax: 877.538.0754
plaskolite@plaskolite.com
www.plaskolite.com

FAB006_PSK_Lighting 1021