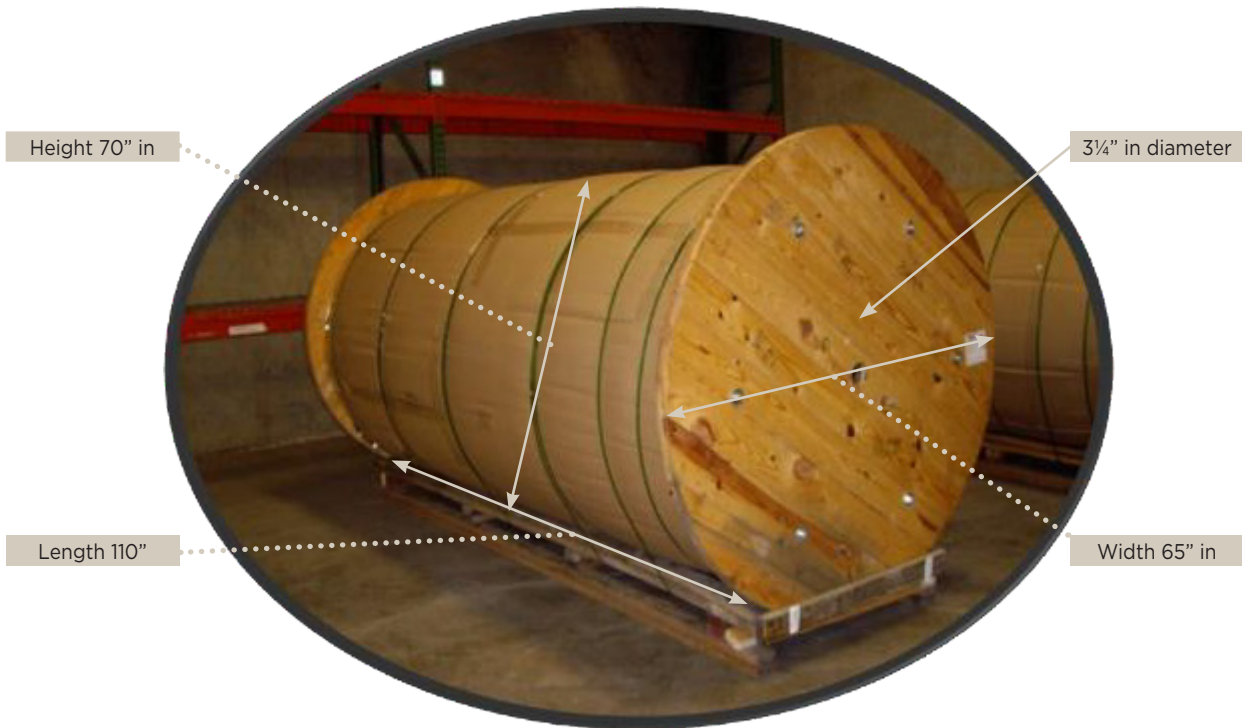


This technical bulletin applies to reels of **OPTIXL XL**, **Lucite SPA** and **Lucite Bath** continuous cast acrylic

Product Offering

Thickness, inch	Width, inch	Length, feet	Length, inch	Net Weight (lbs.)	Square, feet
0.125"	100"	700"	8400"	4,439	5,833
0.187"	100"	467"	5600"	4,500	3,888



OPTIX XL REEL HANDLING

Moving reels

Gross Weight 5,000 lbs.



Lifting by hoist



On reel stand



OPTIX XL REEL HANDLING

Reel on transportable “A” frame trolley stand



2 1/2" in holes 8" in from center

Handling / Cutting

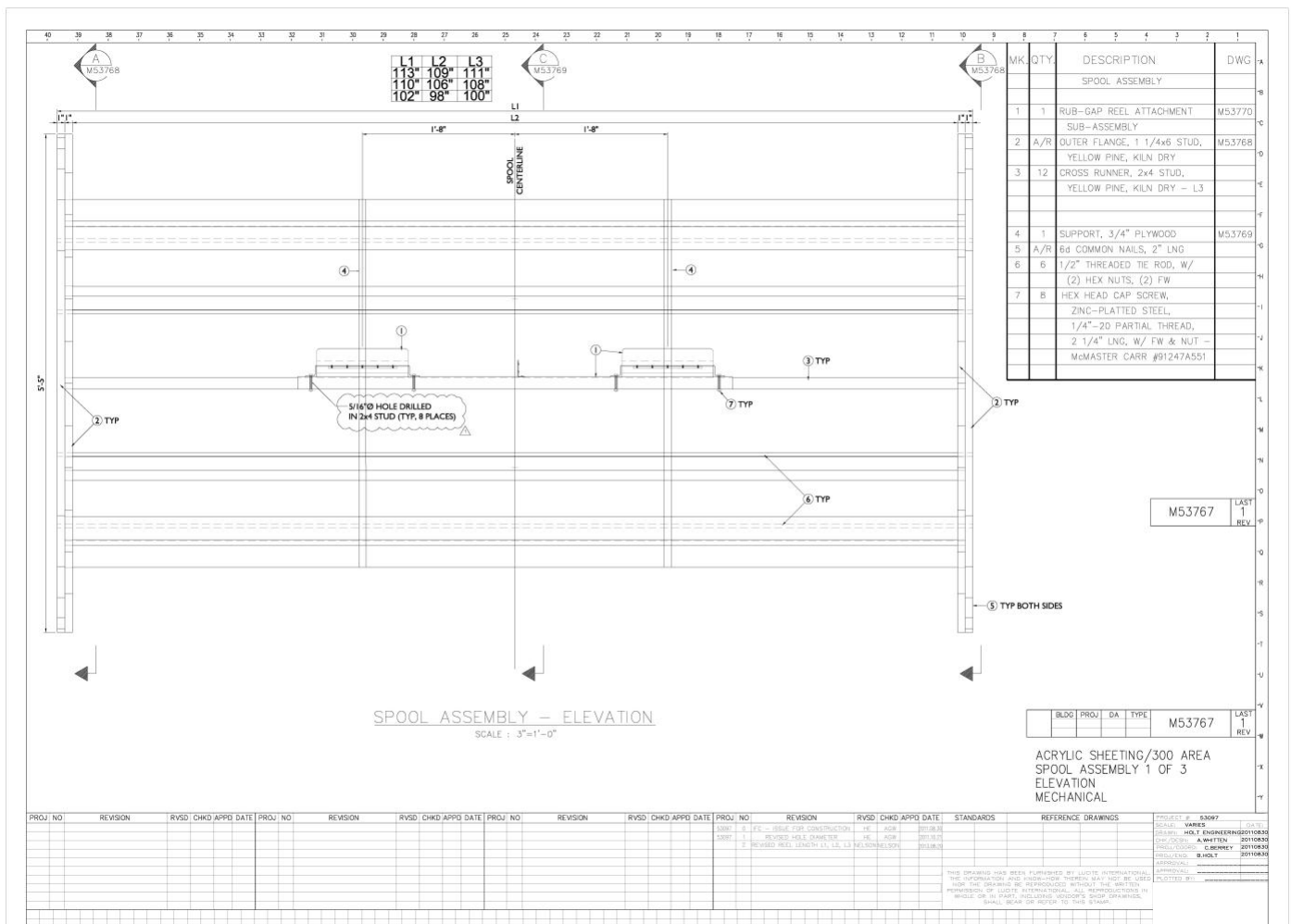
- » Keep the reel in the original aluminum over wrap film before use.
- » Do not store outdoors.
- » The reel must be transferred from the cradle pallet used in transport to a reel stand.
- » Fork lift truck, hoist or pallet truck can be used.
- » Use a 3" in diameter steel mandrel to support the reel on the reel stand.
- » 2 1/2" in diameter holes are provided 8" in from center if a mechanical unwind drive is used.
- » The sheet is relatively easy to unwind by hand. Take care not to unwind too fast.
- » Carbide tipped circular saws are recommended.
- » Standard circular saw used to cut flat sheet can be used.
- » It's worth looking at the Mafell PSS 3100 e panel saw with saw dust extraction.
- » A portable vacuum cleaner, such as a "Shop Vac®" is strongly recommended to clean up saw dust.
- » Always cut length of sheet first.
- » Sheet must be clamped on "reel" side before cutting.
- » The cutting table should be covered with clean protective felt to minimize scratching.
- » Scribe cutting is NOT recommended.
- » Take extra care when cutting the sheet in the machine direction (when reducing the sheet width). During storage the sheet will have gained stress not normally found with flat sheets.
- » Handle the cut sheet before thermoforming with extra care as it will have internal stress.
- » Use a large portable 'A' frame to take the sheet to the forming area.

OPTIX XL REEL HANDLING

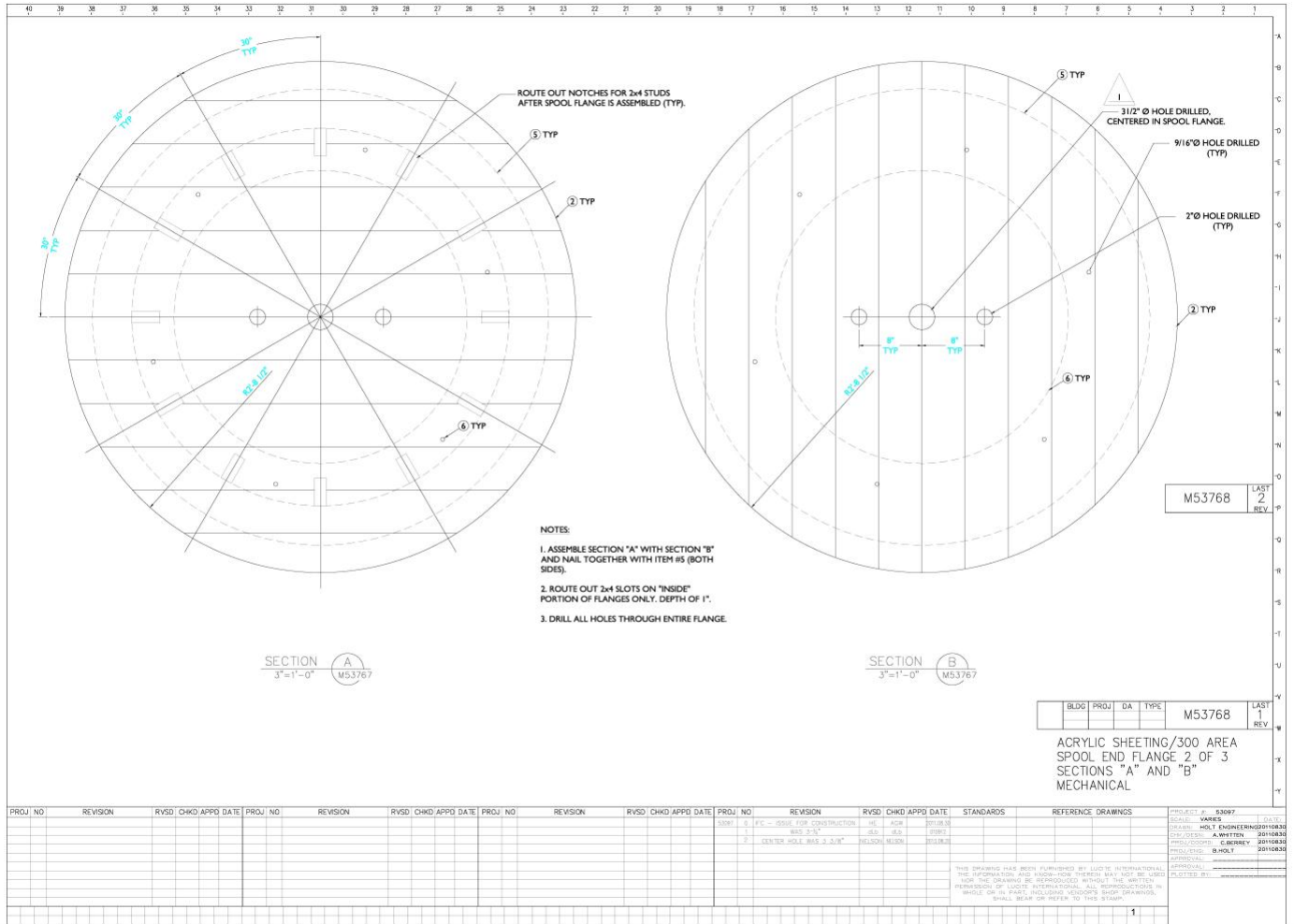
Sizes of reels and cradles (Inches)

Sheet	Cradle	Reel	Reel
Width	Outside length	Outside length	Inside length
90"	106.5"	102"	98"
100"	114.5"	110"	106"
102"	117.5"	113"	109"

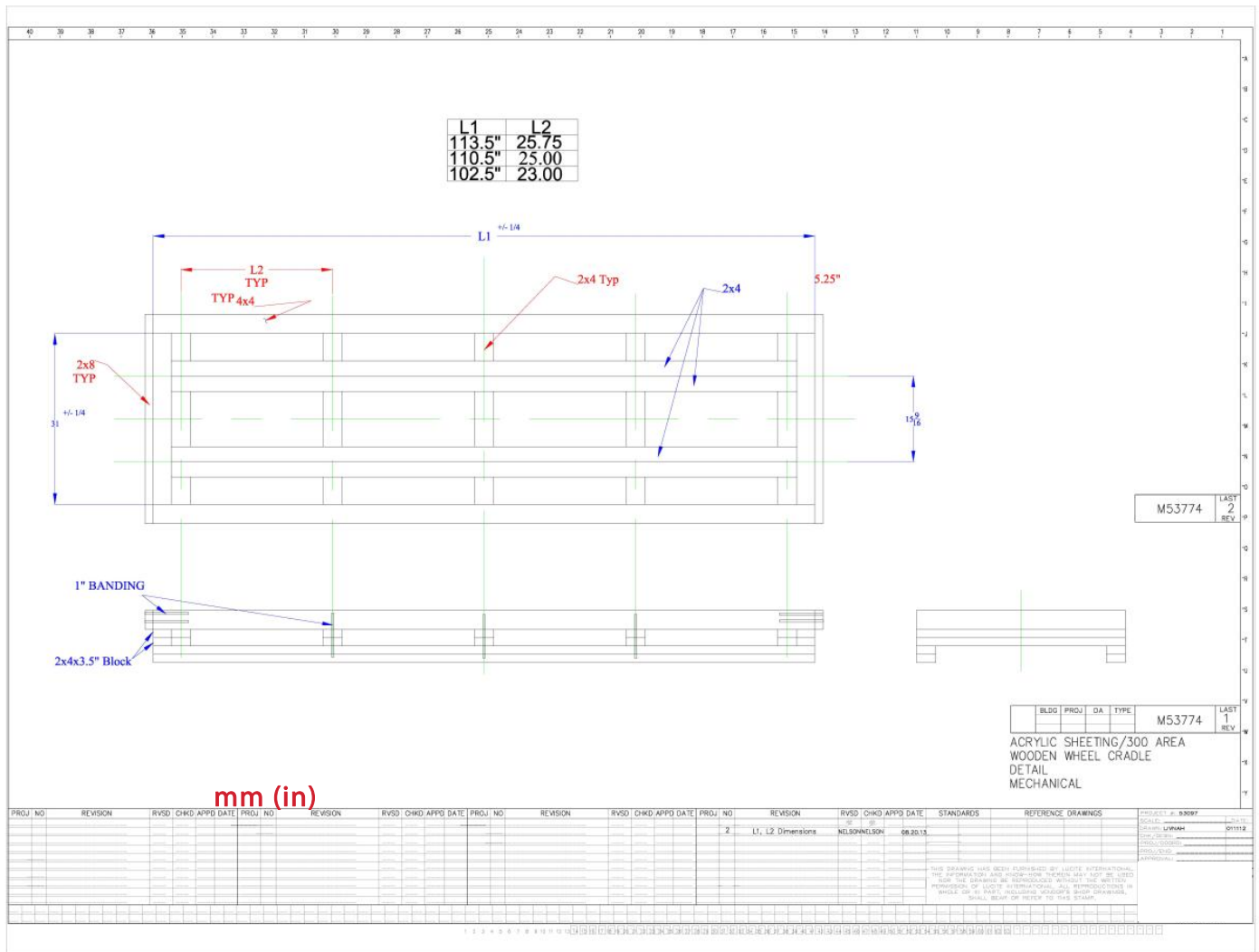
Engineering drawings of wood reel and cradle



OPTIX XL REEL HANDLING



OPTIX XL REEL HANDLING



For further information, call PLASKOLITE Technical Service at 800-848-9124.

These suggestions and data are based on information we believe to be reliable. They are offered in good faith, but without guarantee, as conditions and methods of use are beyond our control. We recommend that the prospective user determines the suitability of our materials and suggestions before adopting them on a commercial scale.

© 2023 PLASKOLITE, LLC 082023
Optix® XL is a registered trademark of PLASKOLITE LLC

PLASKOLITE

400 W Nationwide Blvd.
Suite 400
Columbus, OH 43215
800.848.9124 • Fax: 877.538.0754
plaskolite@plaskolite.com

TCH121_OP_XL_Reel